

PRODUCT SHEET

GlobalSuite® Risk Management

With GlobalSuite® Risk Management, transform your approach to risk: move from reactive to strategic. Designed for organizations that need to ensure compliance, mitigate threats, and make data-driven decisions.

What is GlobalSuite®?

The all-in-one GRC solution for managing risk, security, compliance, TPM, privacy, audit, ESG, and business continuity. Flexible and ready to adapt to your regulations, industry, and organizational structure.

Key features

Risk management

- Process monitoring and evaluation.
- Risk analysis adaptable to any methodology.
- Risk assessment, maps, and automatic dashboards.
- Risk treatment and management plan with workflows.
- Identification of threats and vulnerabilities.
- Testing of elements, assets, risks, and controls.
- Definition and monitoring of KRIs.

Incident Management and PDCA

- Customizable incident management with workflows.
- Loss event management.
- Real-time risk management.
- Management of non-conformities, corrective and/or preventive actions.
- Supplier evaluation.

What does GlobalSuite® Risk Management allow you to do?

Optimize your Risk Management System, leaving behind manual methods that reduce your team's effectiveness. Let us take care of it; we know what we're doing:

- Analysis and control of uncertainty to keep risks under control.
- Efficiency and effectiveness of the treatment plan.
- Monitoring of the application and results of controls.
- Establishment of traceability, monitoring, and continuous improvement processes.

Regulatory compliance

- Preloading of regulatory catalogs.
- GAP analysis.
- Automatic compliance plan with workflow.
- Centralized compliance evidence.
- Compliance questionnaires.
- Comparisons between periods.
- Compliance history.

Reporting, BI, and decision-making

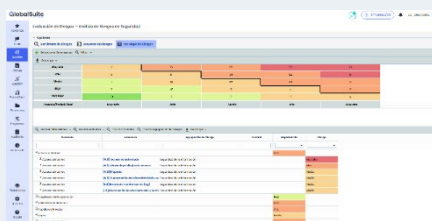
- Executive dashboards.
- Data integration and complete traceability.
- Unified view of compliance in real time.
- Automatic reports in Word and Excel, always up to date.

Surveys and evaluations

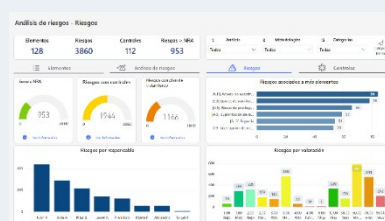
- Easily gather information through customizable surveys.
- Evaluate key processes and areas by automating questionnaires.
- Facilitate decision-making with real data.

Artificial intelligence

- Risk and control generator based on business parameters.
- AI assistant to answer questions, guide you through the platform, and streamline risk management and compliance in real time.



RISK ANALYSIS - HEAT MAP



RISK ANALYSIS - DASHBOARD

And best of all: ready to go

Our GlobalSuite® Risk Management solution features a series of preconfigured frameworks for global, regional, and local frameworks.

You can start working from day one, without having to spend time loading compliance catalogs, risk and control catalogs, or methodologies. Everything is set up to optimize time and allow you to focus on what matters most: your goals and your processes.

✓ ISO 31000

✓ COSO

✓ MAGERIT

✓ EBIOS

✓ BOWTIE

✓ MEHARI

✓ OCTAVE

✓ ISO 27005

✓ OPERATIONAL RISKS

✓ NIS2

What makes us different?

All-in-one, adaptable, and comprehensive GRC software

A single platform to manage **risk, security, compliance, privacy, audit, business continuity, TPRM, and ESG**. Flexible and ready to align with your regulations, industry, and organizational structure.

Fast and efficient implementation

Unlike other solutions with long integration cycles, GlobalSuite® allows you to operate with dashboards, workflows, and processes in just **3 to 6 months**. Ready to go from day one.

Personalized consulting support

Beyond the software, **our expert team guides you through the entire process**, adapting the solution to your operational and regulatory context for maximum effectiveness.

The best ROI per euro invested in the GRC market

This combination **makes GlobalSuite® the most cost-effective GRC platform available**.



"The most flexible all-in-one GRC platform, fastest to implement with the highest return on investment."

The smartest way to manage GRC



GlobalSuite
SOLUTIONS

Contact our representatives to request more information, a demonstration of our product, or a free trial of the software.

T +34 911 883 659

E comercial@globalsuitesolutions.com

W www.globalsuitesolutions.com