

## PRODUCT SHEET

# GlobalSuite<sup>®</sup> AI Governance

AI Governance software that drives responsible artificial intelligence

Orchestrate the lifecycle of your AI systems: inventory, risks, controls, compliance, and evidence... all in a single environment.

## What is GlobalSuite<sup>®</sup>?

The all-in-one GRC solution for managing risk, security, compliance, TPRM, privacy, audit, ESG, AI, and business continuity. Flexible and ready to adapt to your regulations, industry, and organizational structure.

## What does GlobalSuite<sup>®</sup> AI Governance do?

Centralize AI governance (inventory, risks, controls, evidence, traceability, and reporting), aligning business, legal, data, and technology to operate models securely, responsibly, and in compliance with regulations.

- Total visibility: inventory of use cases, systems, datasets, and suppliers.
- Risks under control: uncertainty analysis, risk assessment, and compliance with controls and evidence.
- Governed lifecycle: policies and approvals, change and drift management, post-market monitoring.
- Audit-ready reporting: configurable executive reports and audit reports.

## Key features

### Risk Management

- Definition and classification of AI systems, datasets, use cases, and suppliers
- Technical reports on AI systems
- Risk analysis adaptable to any methodology.
- Catalog of AI-specific risks and controls
- Risk assessment, maps, and automatic dashboards.
- Risk treatment and management plan with workflows.
- Identification of risk mitigation controls and automation of residual risk calculation
- Definition and monitoring of KRIs.
- Unlimited history.

### Incident management and continuous improvement.

- Customizable AI incident management with workflows.
- Management of non-conformities in audits, corrective and/or preventive actions.
- Change management in use cases and post-market monitoring

### Compliance

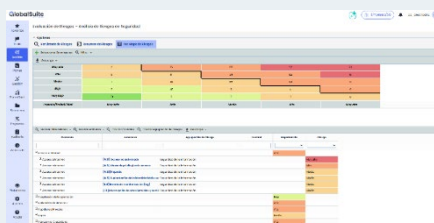
- Preloading of regulatory catalogs such as AI Act and ISO 42001.
- GAP analysis.
- Centralized compliance evidence.
- Comparisons between periods.
- Compliance history.

### Reports, BI, and decision-making

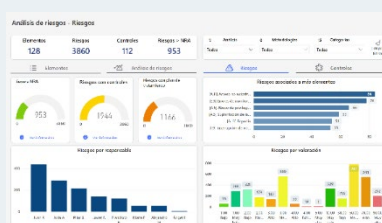
- Document management with document lifecycle.
- AI Systems technical reports
- Unlimited report templates.
- Functionality-specific reports

### Artificial intelligence

- Risk and control generator based on business parameters.
- AI assistant to answer questions and guide you through the platform.
- Document assistant with policy processing to identify improvements.
- Compliance assistant to monitor progress and propose controls based on AI.



RISK ANALYSIS - HEAT MAP



RISK ANALYSIS - DASHBOARD

## And best of all: ready to go

Our GlobalSuite® IA Governance solution features a series of preconfigured frameworks for global, regional, and local frameworks.

You can start working from day one, without having to spend time loading compliance catalogs, risk and control catalogs, or methodologies. Everything is set up to optimize time and allow you to focus on what matters most: your goals and your processes.

✓ ISO 42001

✓ ISO 23894

✓ AI Act

✓ Data Act

## What makes us different?

### All-in-one, adaptable, and comprehensive GRC software

A single platform to manage **risk, security, compliance, privacy, audit, business continuity, TPRM, and ESG**. Flexible and ready to align with your regulations, industry, and organizational structure.

### Fast and efficient implementation

Unlike other solutions with long integration cycles, GlobalSuite® allows you to operate with dashboards, workflows, and processes in just **3 to 6 months**. Ready to go from day one.

### Personalized consulting support

Beyond the software, **our expert team guides you throughout the process**, adapting the solution to your operational and regulatory context for maximum effectiveness.

### The best ROI per euro invested in the GRC market

This combination **makes GlobalSuite® the most cost-effective GRC platform available**.



"The most flexible all-in-one GRC platform, fastest to implement with the highest return on investment."

# The smartest way to manage GRC



**GlobalSuite**  
SOLUTIONS

Contact our representatives to request more information, a demonstration of our product, or a free trial of the software.

T +34 911 883 659

E [comercial@globalsuitesolutions.com](mailto:comercial@globalsuitesolutions.com)

W [www.globalsuitesolutions.com](http://www.globalsuitesolutions.com)