

PRODUCT SHEET

GlobalSuite® ESG

Lead the transition to sustainability and compliance.

Our platform facilitates compliance, risk assessment and key indicator reporting, enabling companies to align with international best practices and new European regulations.

What is GlobalSuite®?

The All-in-One GRC solution for managing risk, security, compliance, TPRM, privacy, audit, ESG and business continuity. Flexible and ready to adapt to your regulations, industry and organizational structure.

Key features

Regulatory compliance

- Information gathering aligned with CSRD and ESRS.
- GRI compatibility for companies outside the EU.
- Management of policies and procedures with checklists.

Double materiality analysis or materiality

- Evaluation of key issues in ESRS and GRI, applying them to the organization and defining customized topics.
- Calculation of double materiality, involving stakeholders to prioritize sustainability issues:
 - Financial materiality: Impact of ESG factors on performance and strategy.
 - Impact materiality: Effects of the company on the environment and society.
- Visualization in Business Intelligence with interactive graphs.

What are the advantages of GlobalSuite® ESG?

- **Simplified compliance:** comply with the most demanding regulations without hassle. Designed to adapt to local and global legislation.
- **Comprehensive, centralized management** Everything in a single environment: from materiality analysis, information gathering or ESG risk analysis, to reporting.
- **Operational efficiency:** time and cost savings through automation and optimized workflows.
- Flexible **adaptability** for business groups with multiple subsidiaries or different **ESG maturity levels**.
- **Data-driven insights:** advanced visualizations for informed, data-backed decision making.

ESRS or GRI data collection

- Customizable surveys to collect key data.
- Association of evidence to controls.
- Integrations via APIs and connectors

ESG risk management

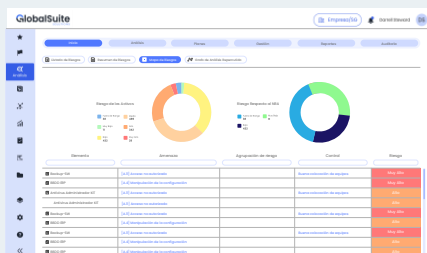
- Customizable risk and control catalog with analysis methodology.
- Optional risk and control mapping
- Residual risk assessment and monitoring.
- Management of risks above acceptable level.

Indicators and metrics

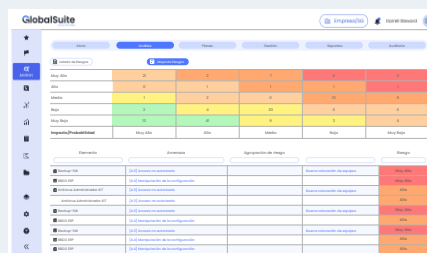
- Carbon footprint calculation.
- Customization of KPIs
- BI Dashboard for real-time monitoring.

Artificial intelligence

- Risk and control generator based on business parameters.
- AI assistant to solve doubts, guide you through the platform and streamline risk and compliance management in real time.



DASHBOARD



HEAT MAP

And the best part: ready to go

Our GlobalSuite® ESG solution has a number of pre-configured solutions for global, regional and local frameworks.

You can start working from day one, without having to spend time loading compliance catalogs, risk and control catalogs and methodologies. Everything is set up to optimize time and allow you to focus on what matters most: your objectives and processes.

Third-party assessment and management programs are becoming larger and more complex so automation is necessary. Key benefits:

- ✓ **Cost Savings**
- ✓ **Risk Reduction**
- ✓ **Third Party**
- ✓ **Confidence Competitive Advantage**

What makes us different?

All-in-one, adaptable and comprehensive GRC software

A single platform to manage **risk, security, compliance, privacy, audit, business continuity, TPRM and ESG**. Flexible and ready to align with your regulations, industry and organizational structure.

Fast and efficient implementation

Unlike other solutions with long integration cycles, GlobalSuite® allows you to be up and running with dashboards, workflows and processes in just **3 to 6 months**. Ready to go from day one.

Personalized consultative support

Beyond the software, **our expert team guides you through the entire process**, adapting the solution to your operational and regulatory context for maximum effectiveness.

Best ROI per euro invested in the GRC market

This combination makes **GlobalSuite® the most cost-effective GRC platform available**.



"The most flexible all-in-one GRC platform, fastest to implement with the highest return on investment."

The Smartest way to manage GRC

